

NEXT STOP —————> BALTIMORE
PENN STATION

Planning Kickoff
July 31, 2018

University of Baltimore

Public Planning Kick-off Agenda

Tuesday, July 31st | 5:30-8pm

5:30 Pre-Function

6:00 Presentation

6:30 Roundtables

8:00 Conclude



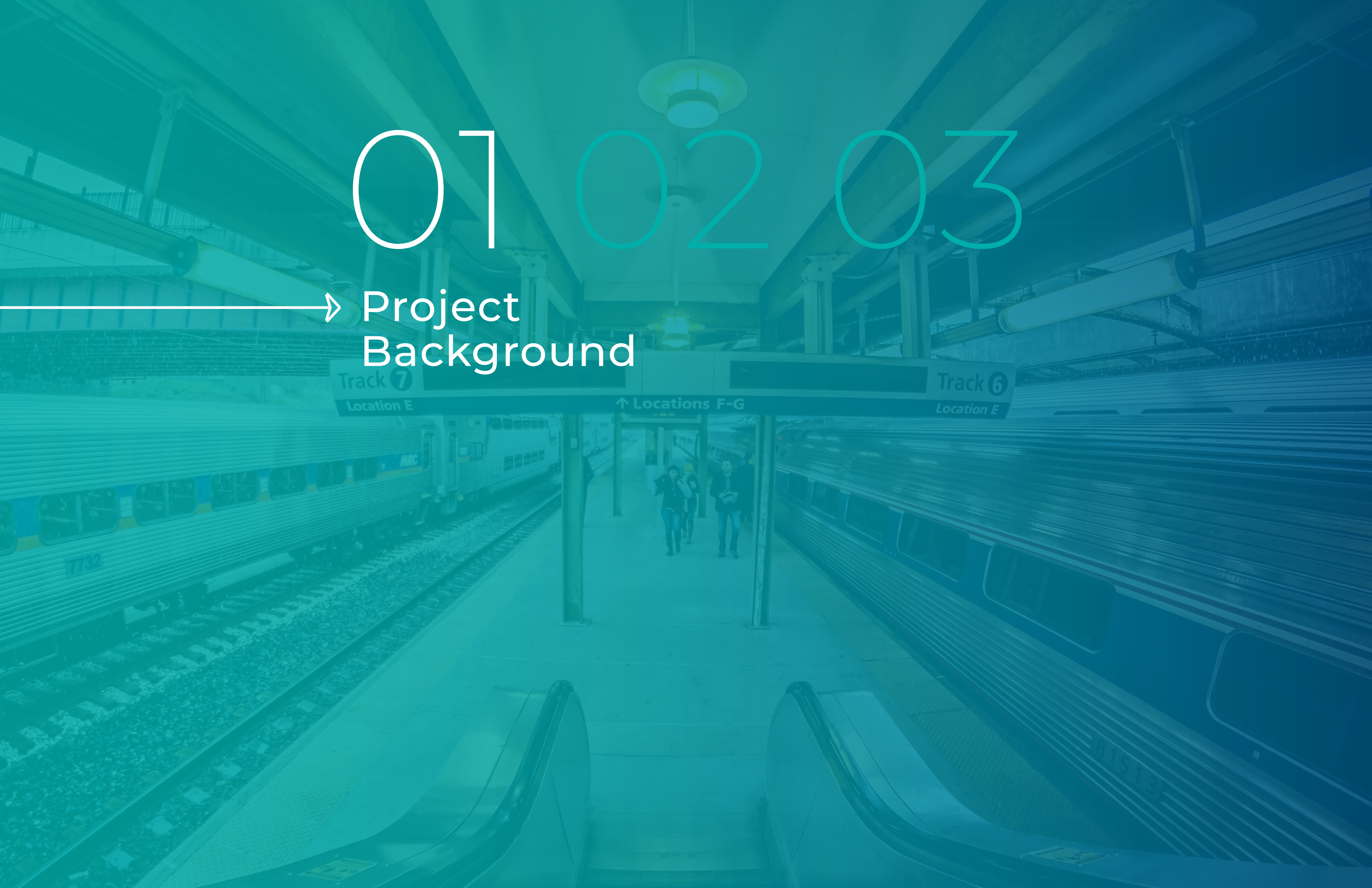
Next Stop: Baltimore Penn Station

Presentation Overview

- 01 Project Background
- 02 Vision Plan
- 03 Roundtable Topics

01 02 03

→ Project
Background



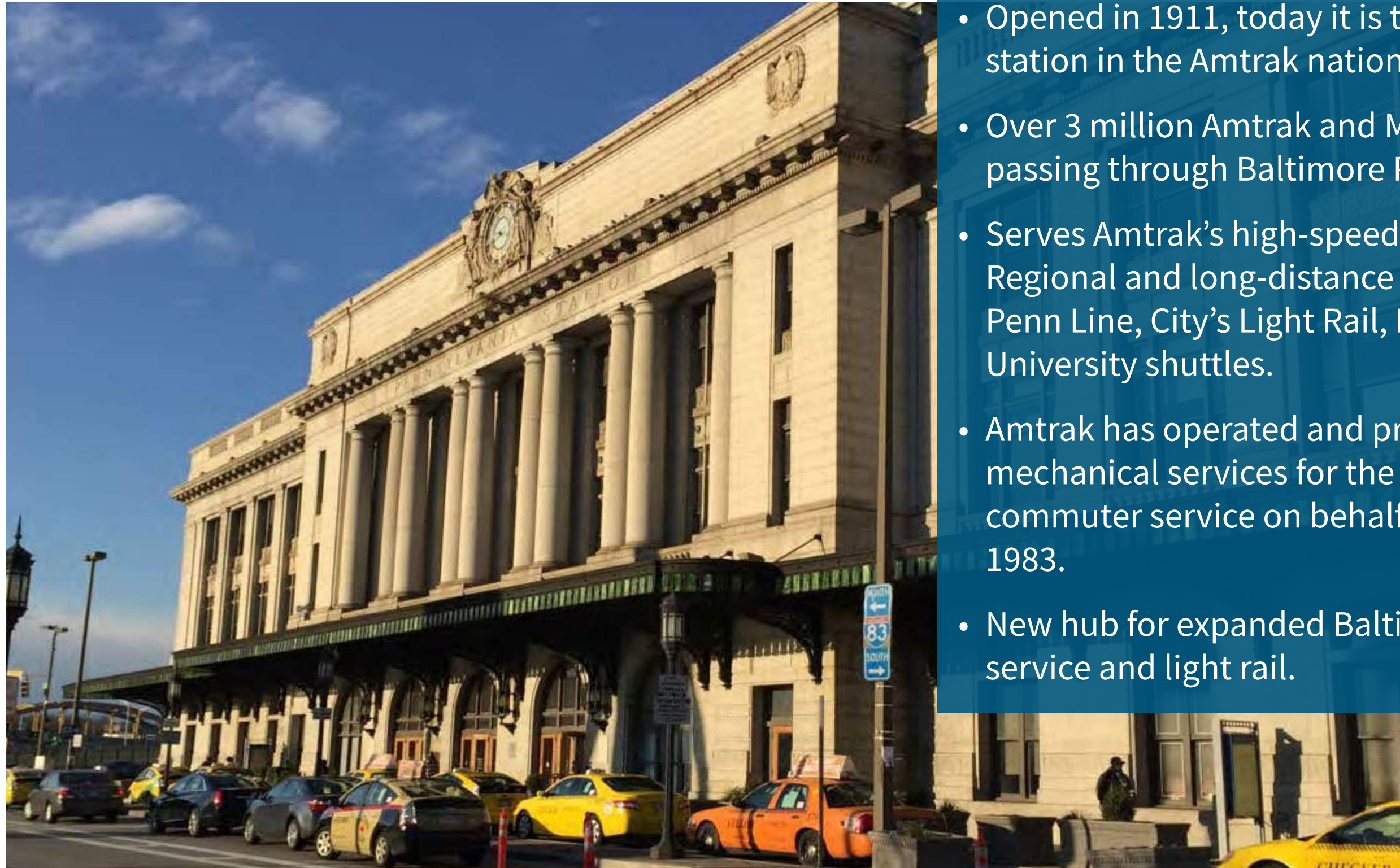
The Amtrak System



Northeast Corridor (NEC)

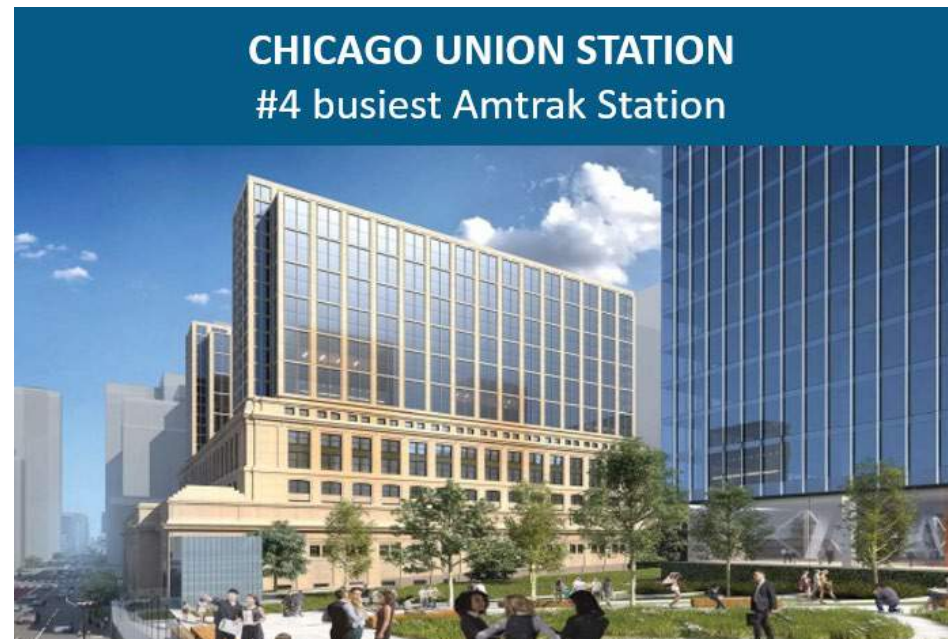
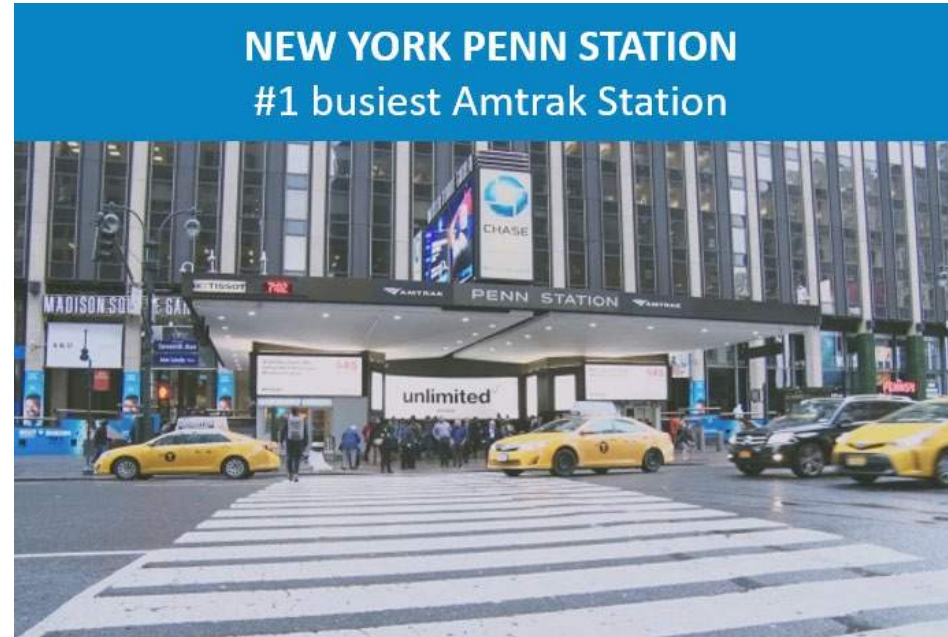


Baltimore Penn Station



- Opened in 1911, today it is the 8th busiest station in the Amtrak national network.
- Over 3 million Amtrak and MARC passengers passing through Baltimore Penn.
- Serves Amtrak's high-speed Acela, Northeast Regional and long-distance trains, MARC Penn Line, City's Light Rail, Buses and University shuttles.
- Amtrak has operated and provided mechanical services for the MARC Penn Line commuter service on behalf of MTA since 1983.
- New hub for expanded BaltimoreLink bus service and light rail.

Amtrak Major Station Efforts



Project Background

New Acela Fleet



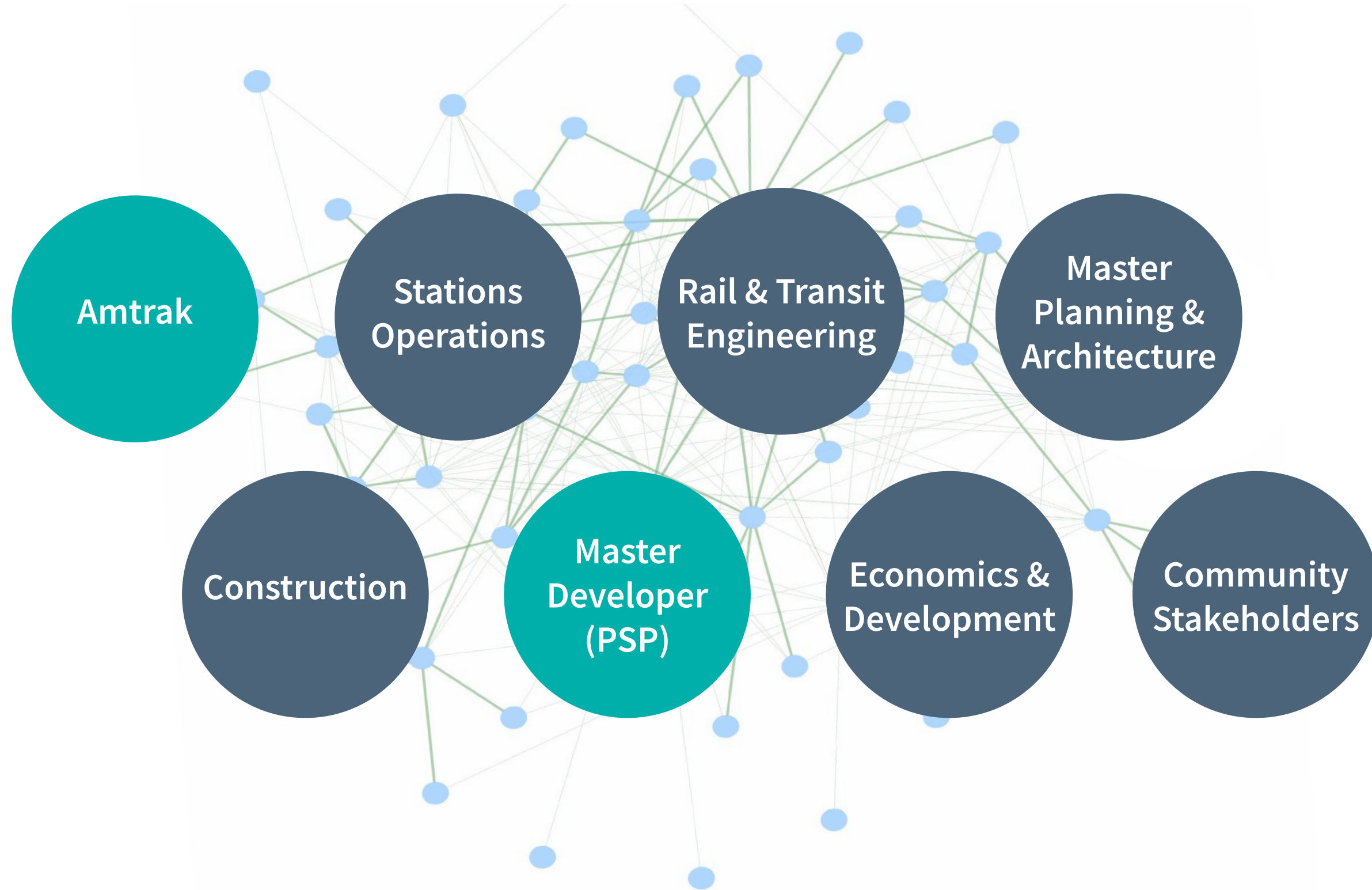
Master Developer Partnership



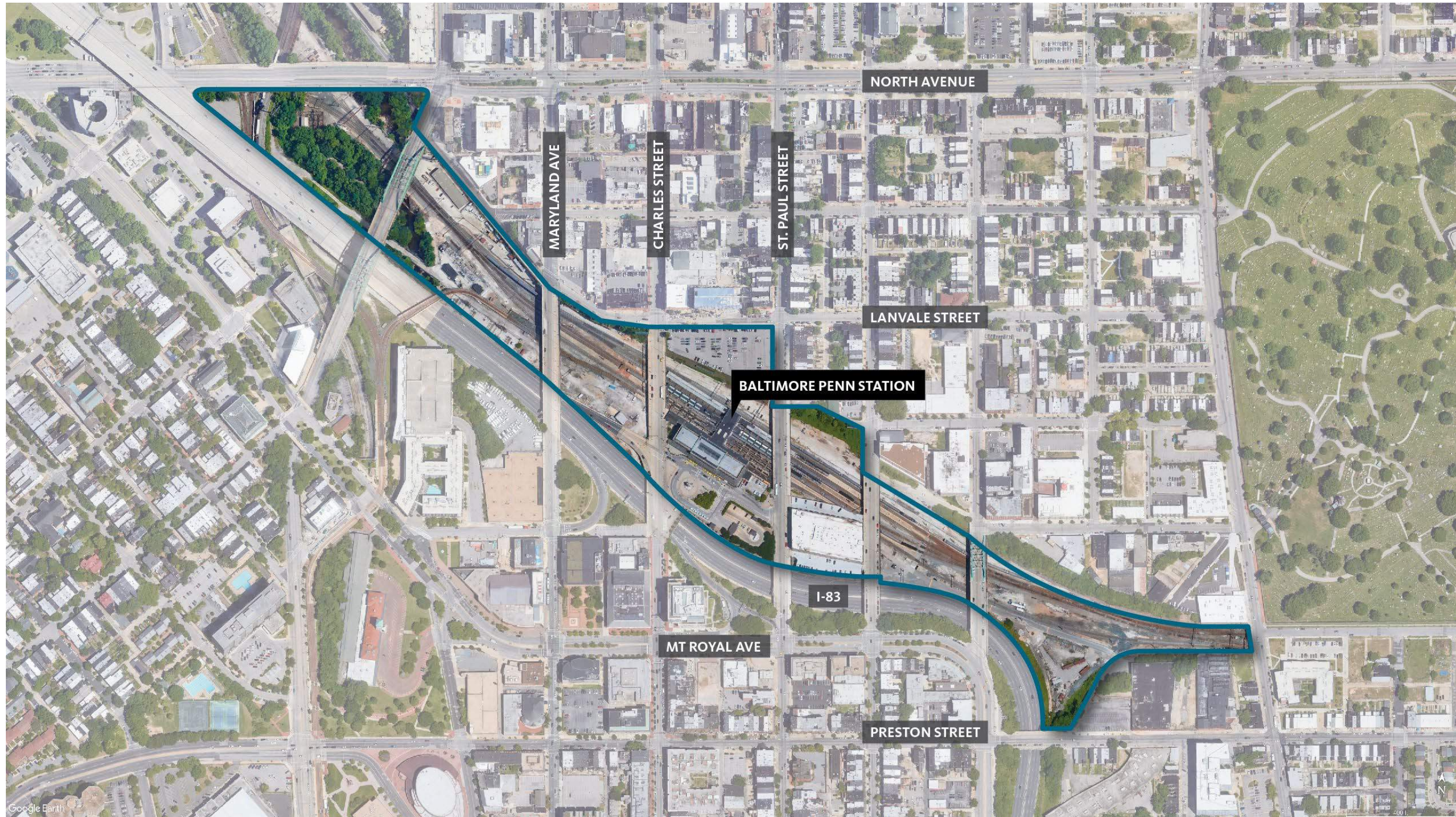
Attract a world-class master developer team to maximize the value of Amtrak's portfolio with a bold, fully integrated mixed-use urban district and a vibrant transportation hub situated at its core.

- Prepare a comprehensive, buildable and financially viable Master Plan for the Station and adjacent Amtrak properties
- Retail and commercial expansion opportunities within the Station, including the upper floors of the headhouse
- Commercial development of Amtrak-owned properties surrounding the Station
- Modernization of the Station to address state of good repair deficiencies and ADA upgrades
- Expansion of the Station to accommodate increased passenger volumes through the year 2040 and beyond
- Operations and maintenance of non-rail and non-railroad operations assets

Penn Station Partners



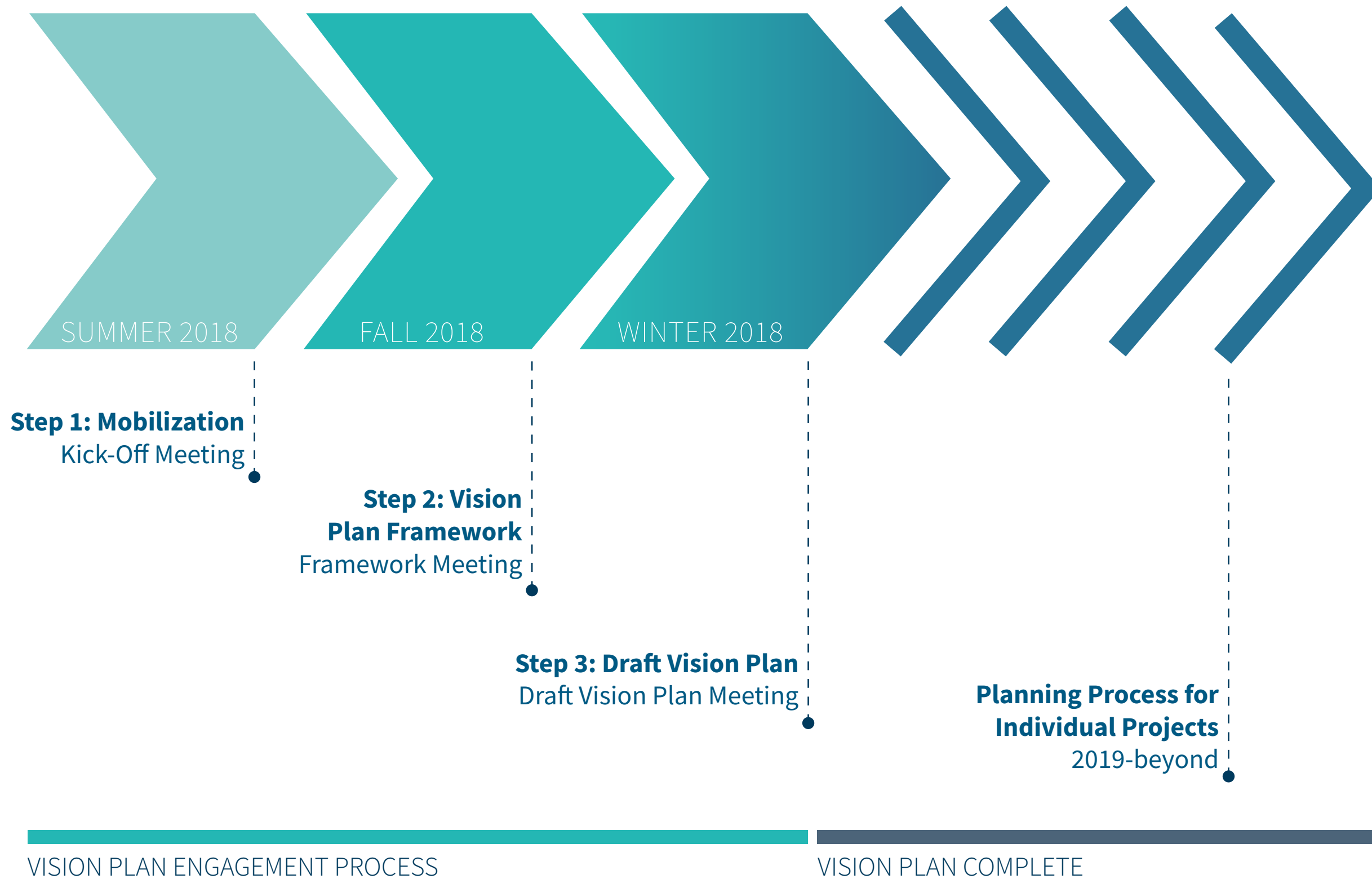
Station Study Area



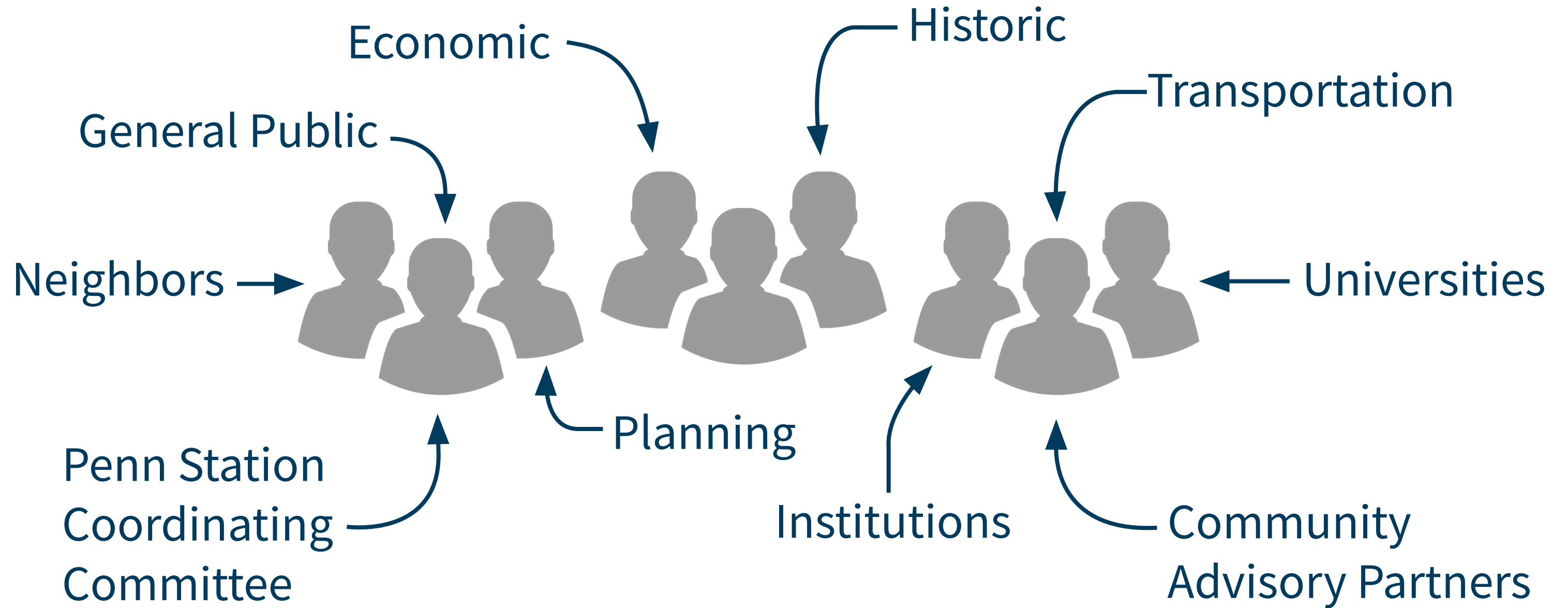
Vision Plan



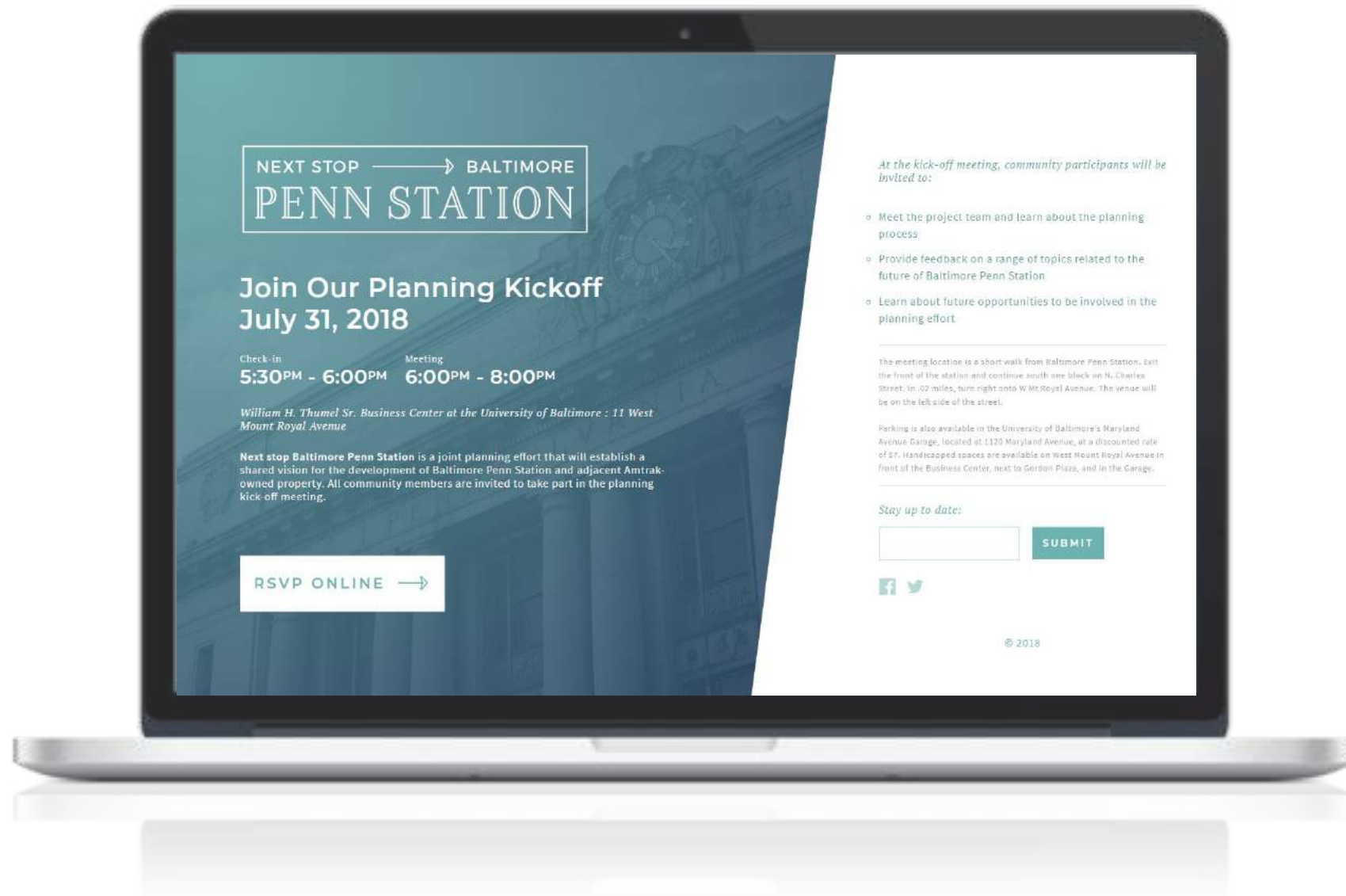
Project Timeline



Project Stakeholders



Interim Communication



www.baltimorepennstation.com

 @baltimorepennstation

 @baltpennstation

01 02 03

→ Vision Plan



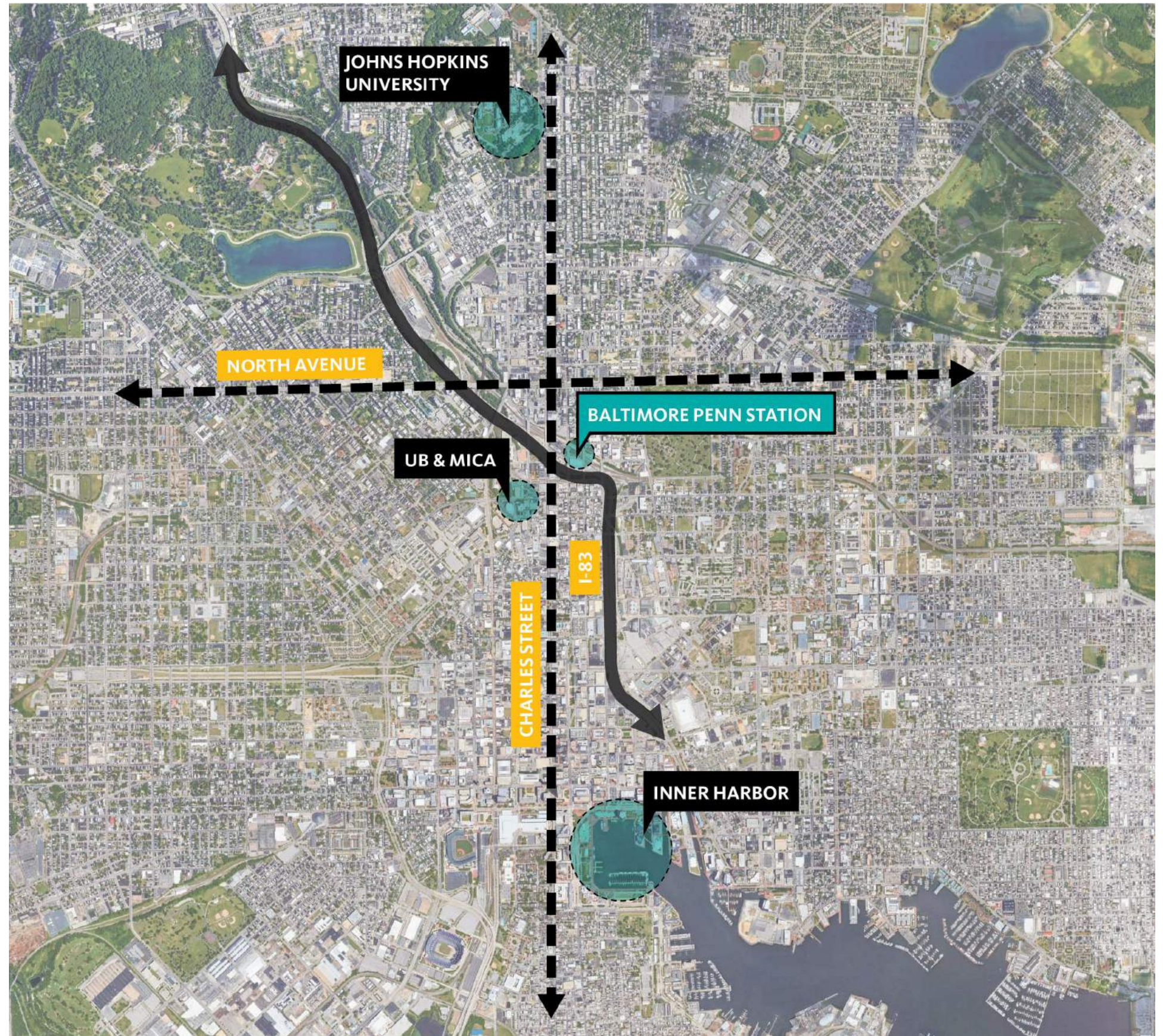
Area Planning History



Key Findings & Recommendations

- Improve existing transit functions and promote alternative modes
- Prioritize residential development to create new customers for local businesses
- Establish gateways, solidify neighborhood edges, and new open space
- Enhance walkability/bikeability around Baltimore Penn Station
- Implement streetscape enhancements
- Celebrate public art

City Context



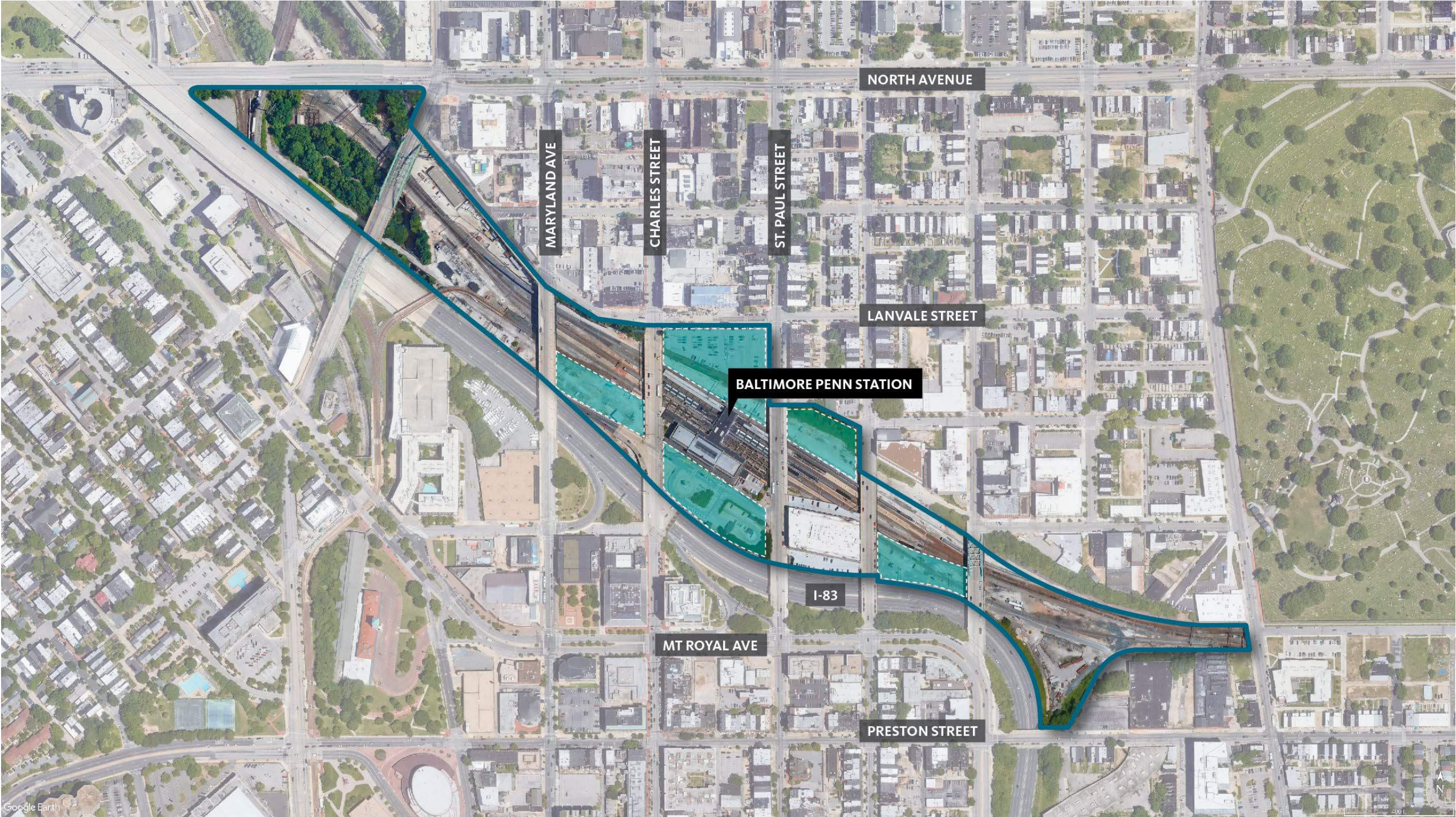
Baltimore Penn Station
is geographically central



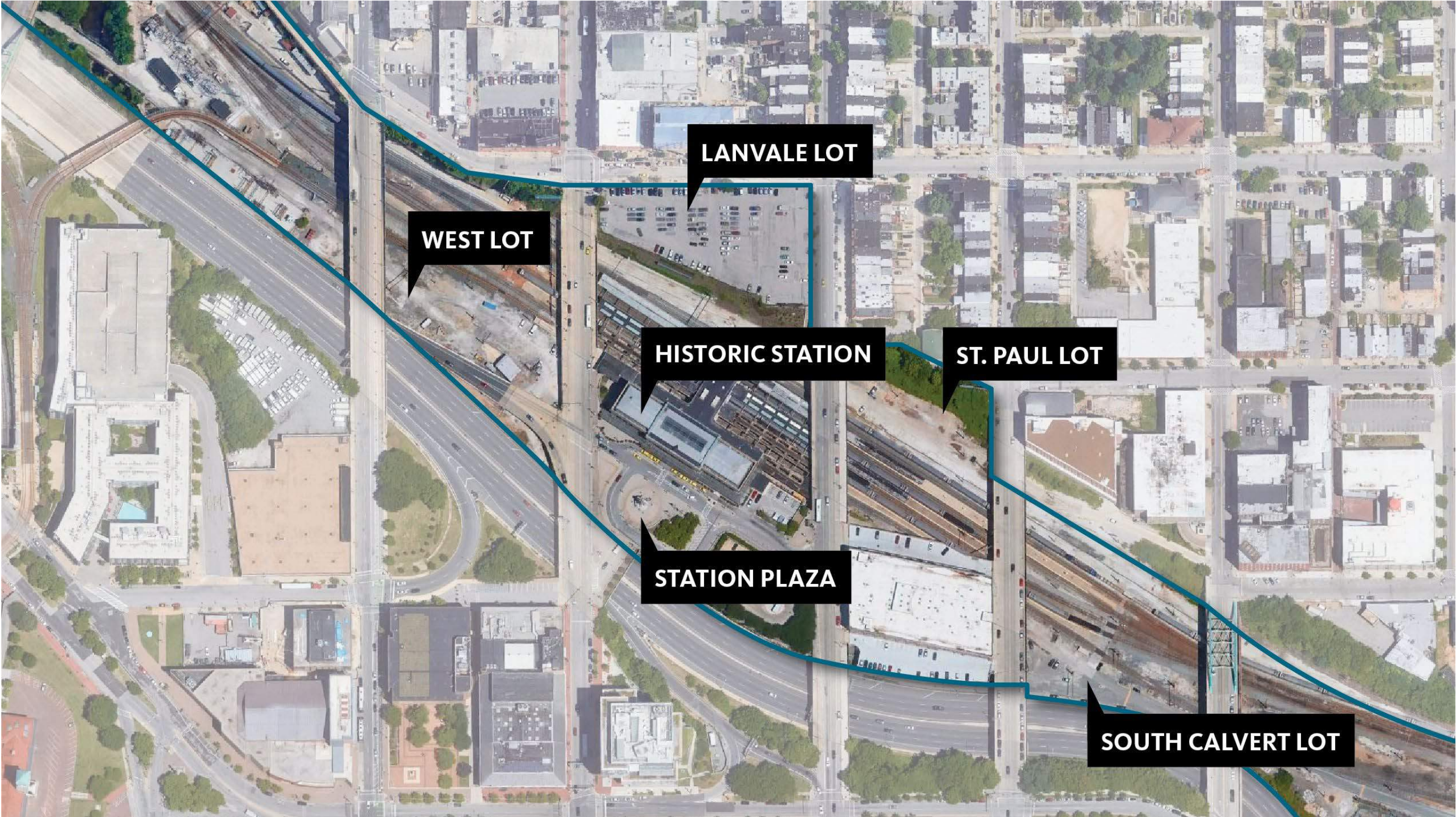
Study Area Extents



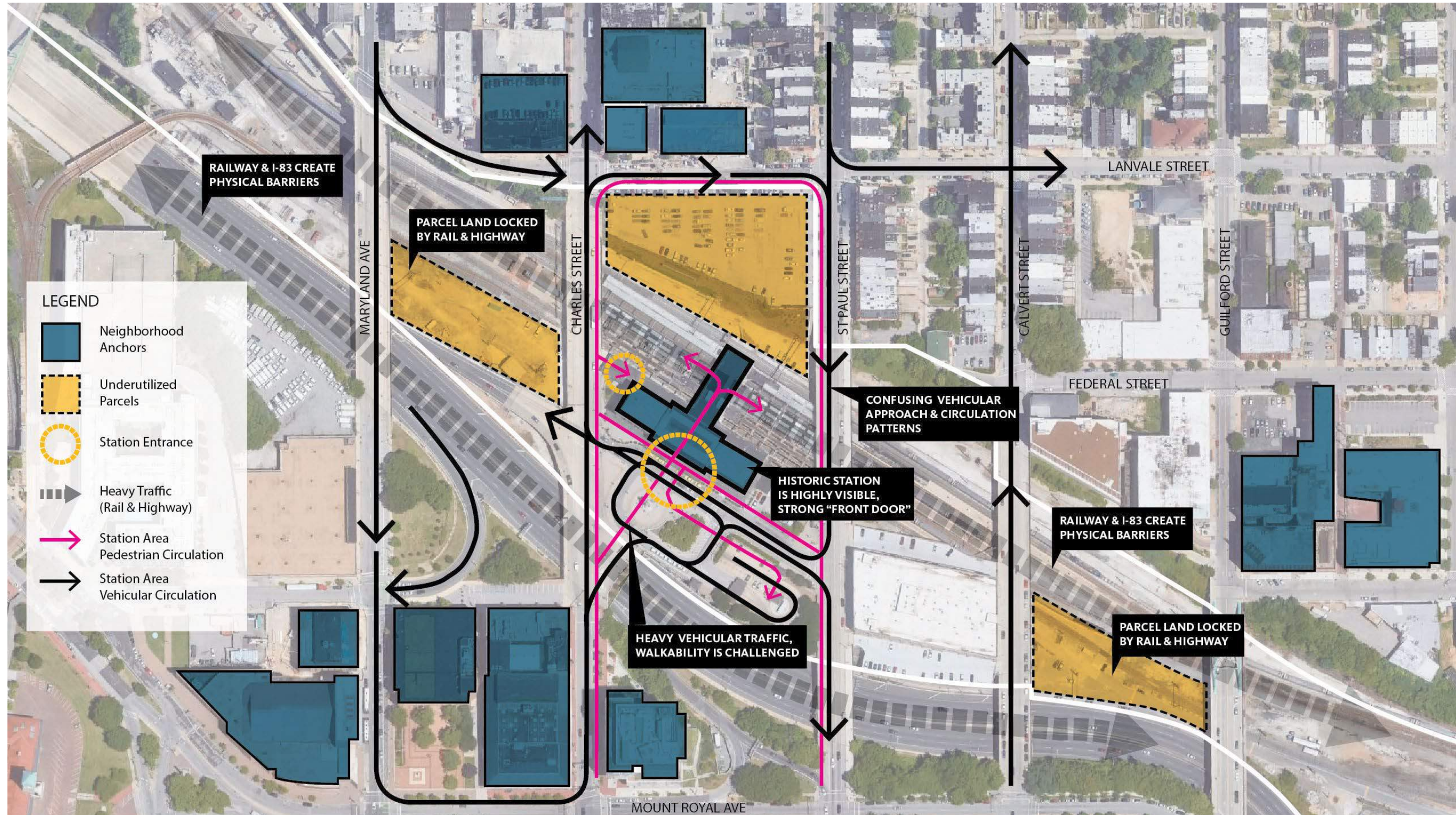
Study Area Extents



Primary Study Area



Opportunities & Challenges

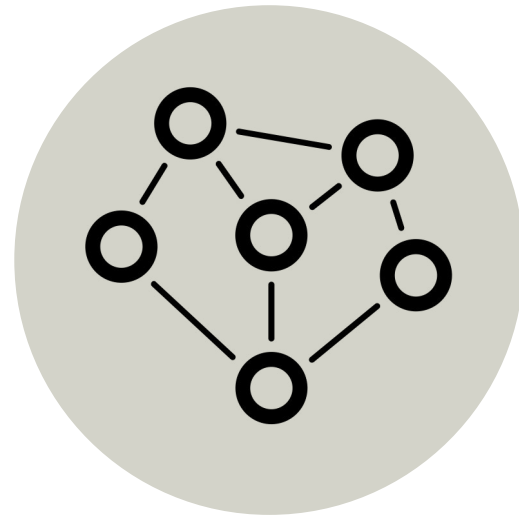


Planning Principles



future rail growth

Accommodate future rail transportation needs



transit connectivity

Improve pedestrian access + multi-modal connectivity



station experience

Create a more active + inviting station environment



community interaction

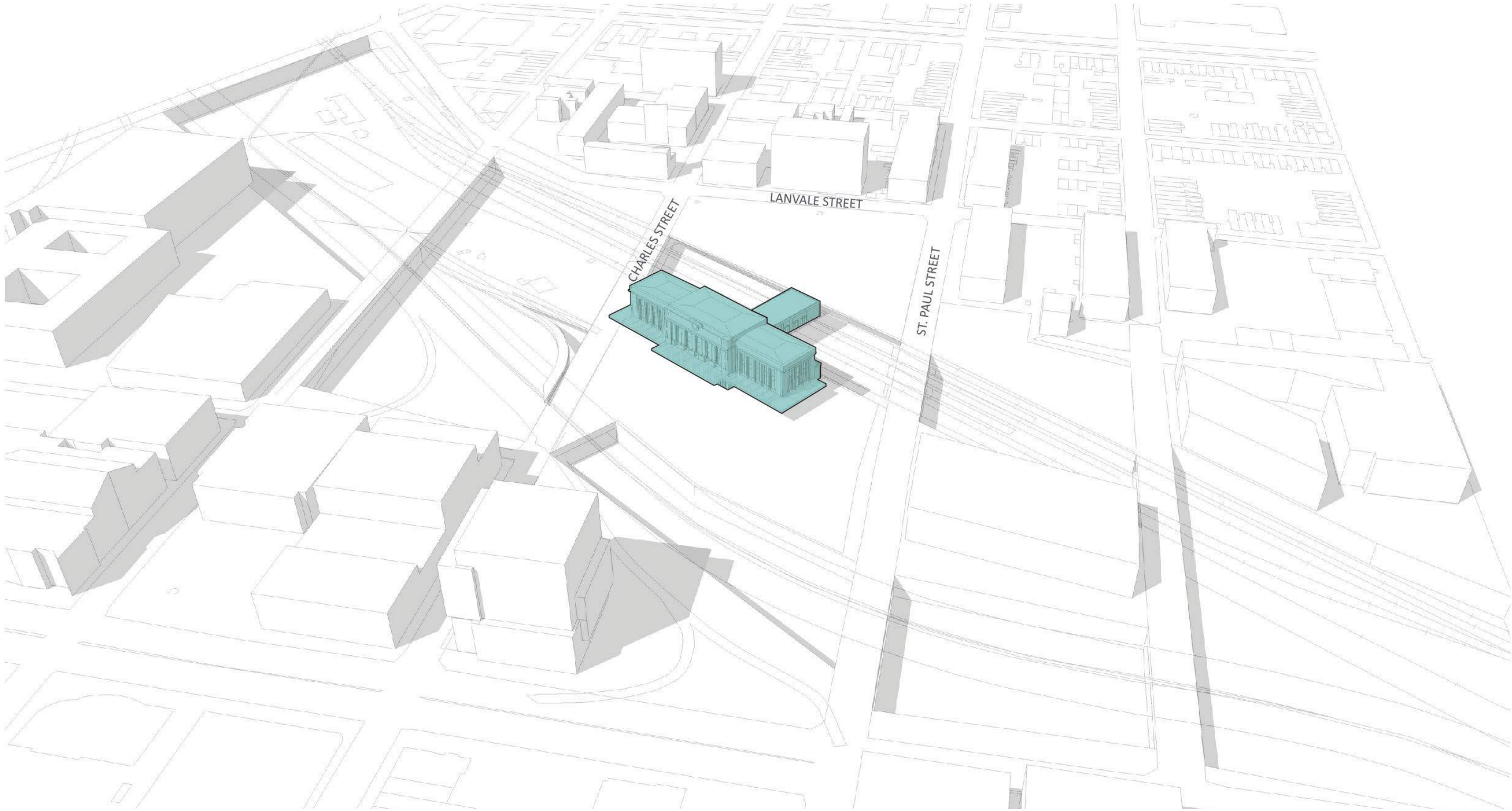
Connect with existing communities



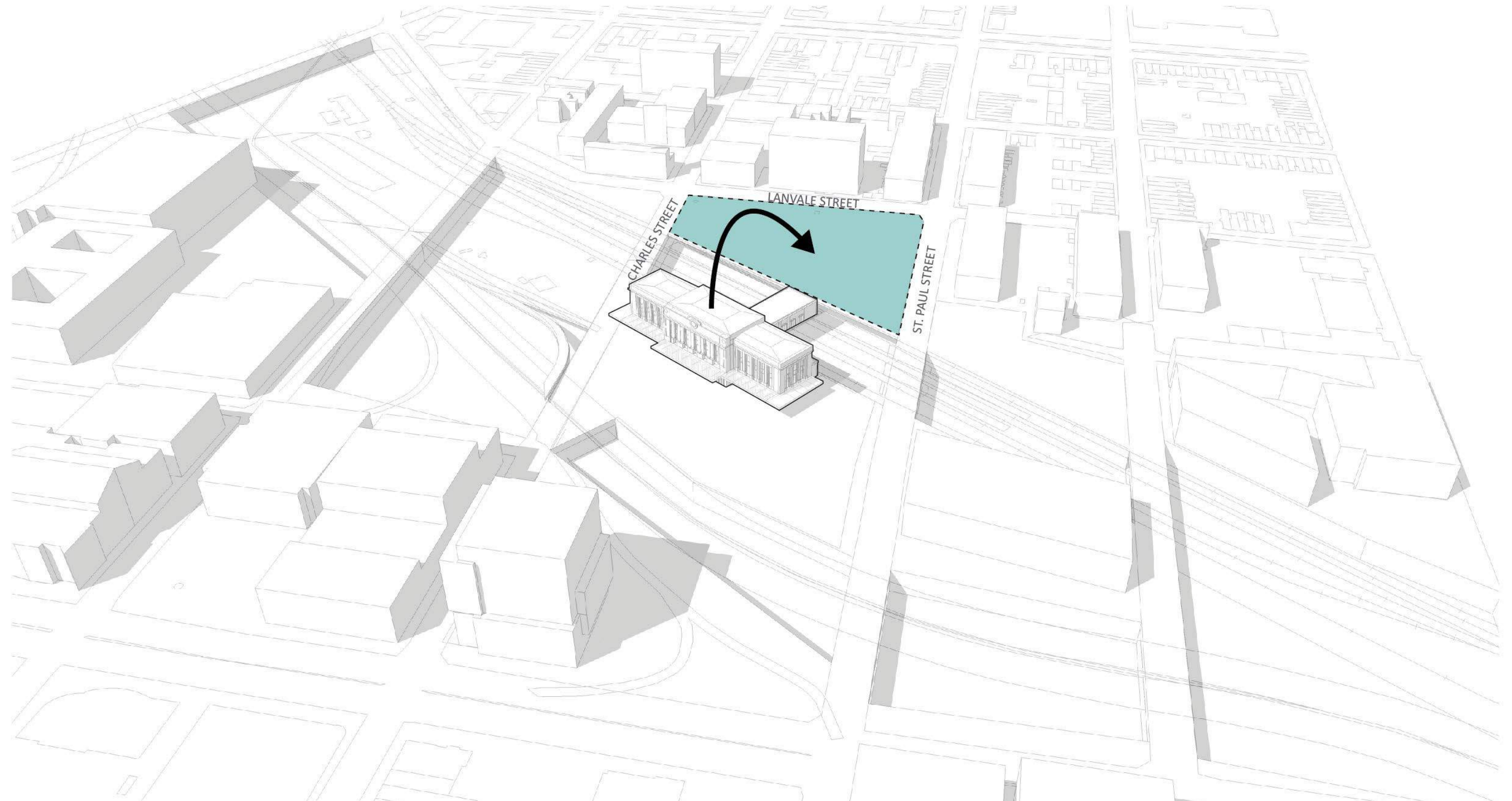
station heritage

Celebrate + respect the historic station

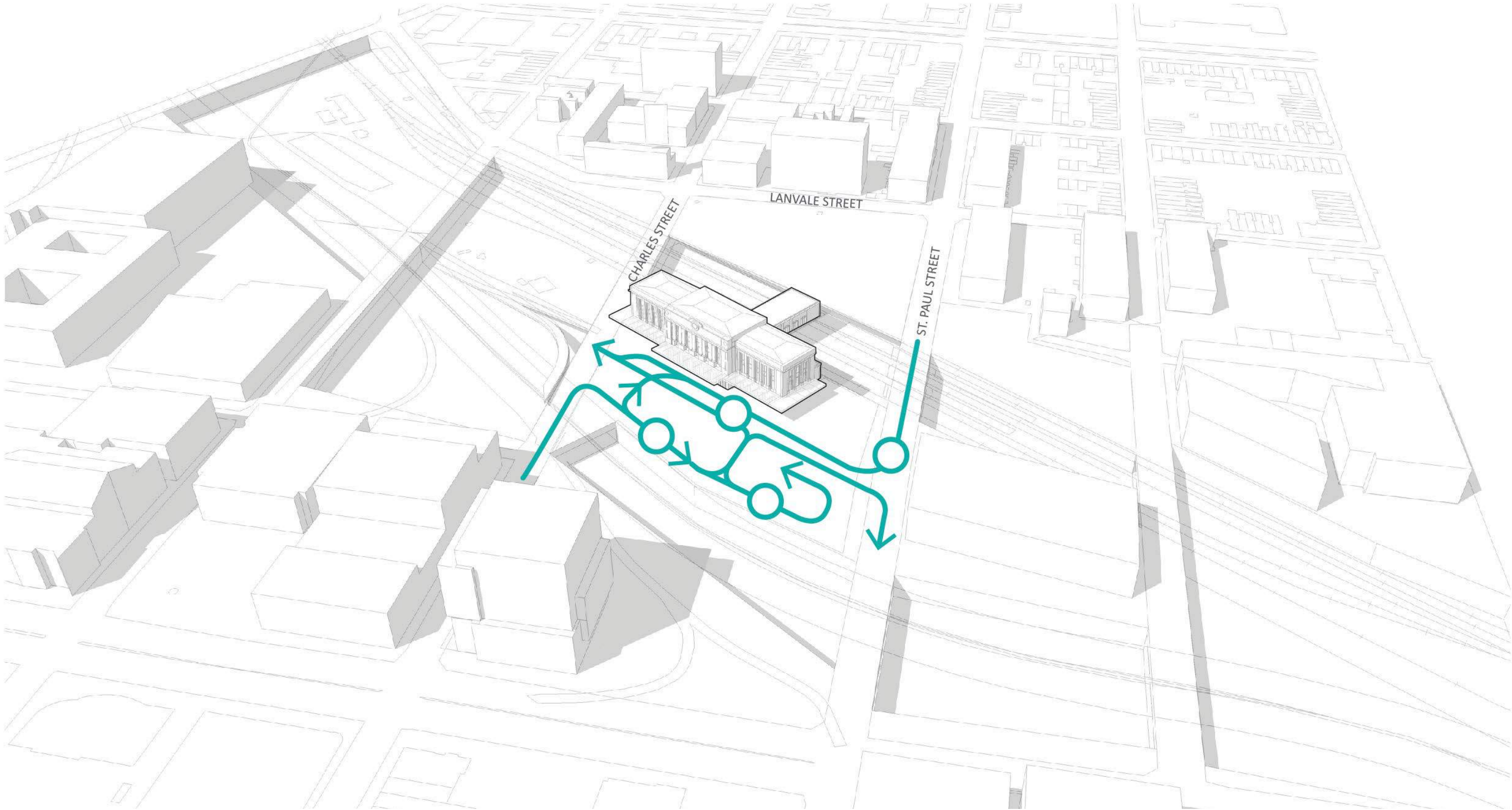
Now...the station houses Amtrak functions & waiting areas...



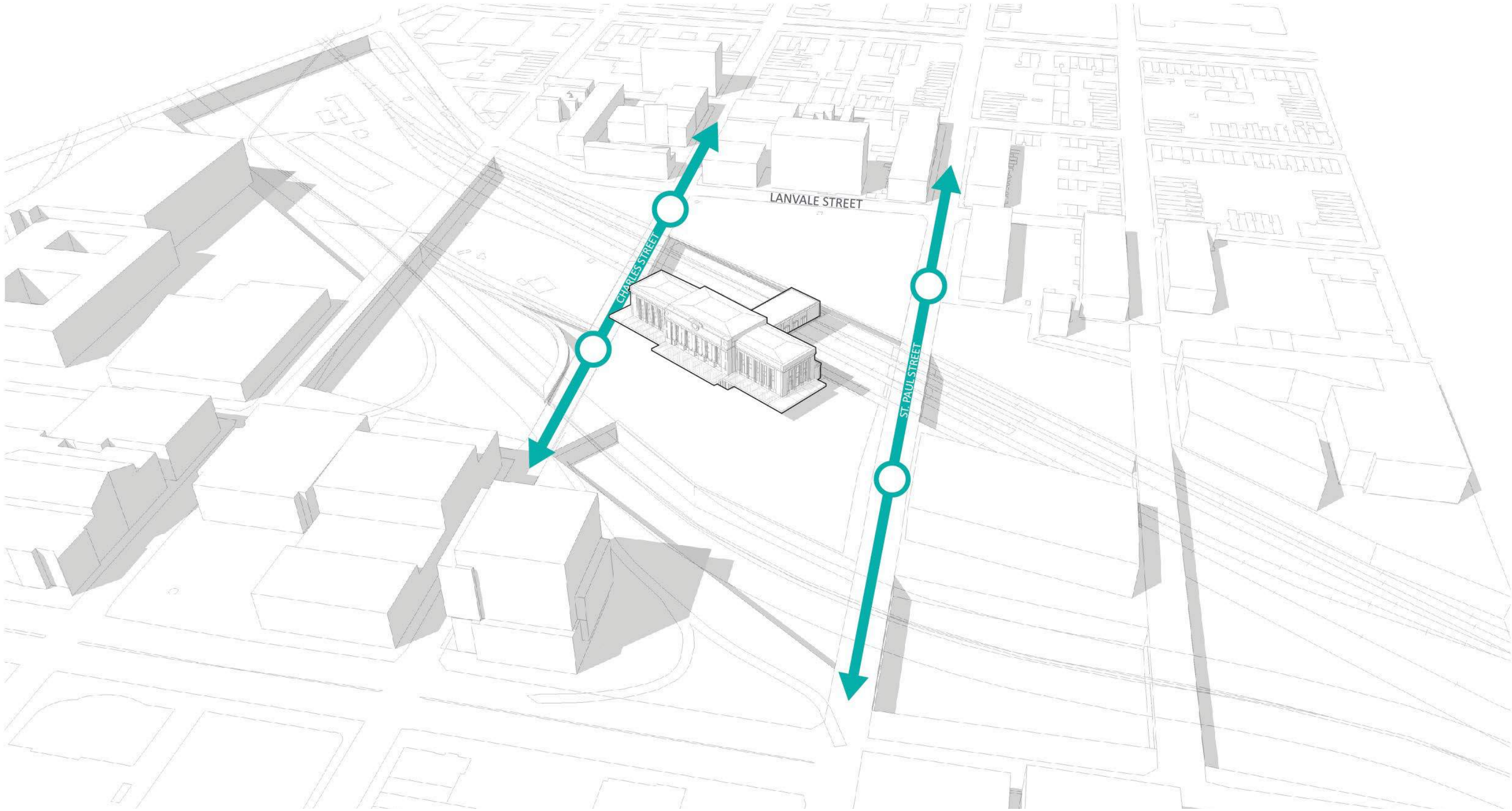
What if...new and improved station spaces were built outside of the Historic Station?



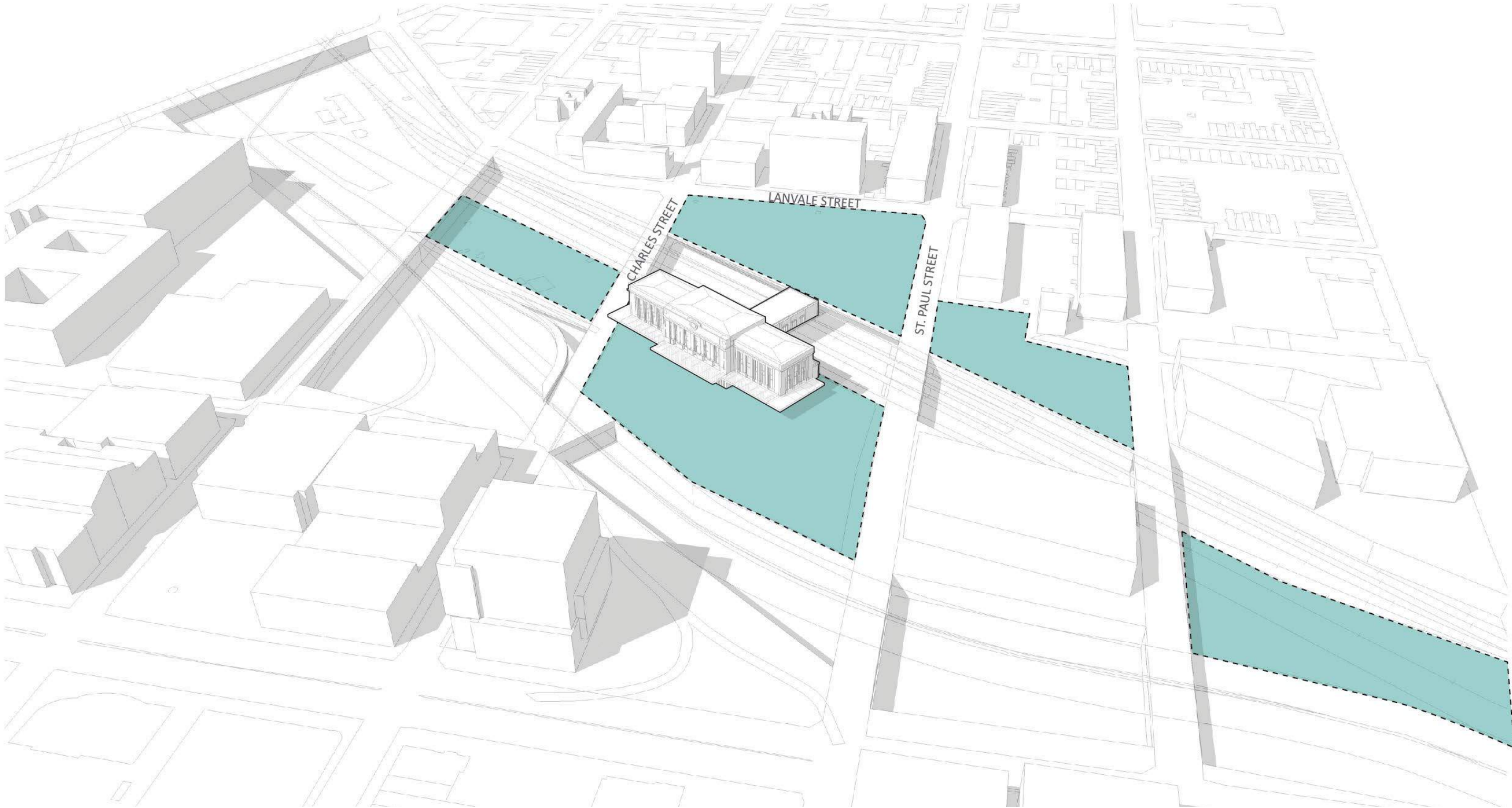
Now...the station plaza prioritizes cars...and is still congested...



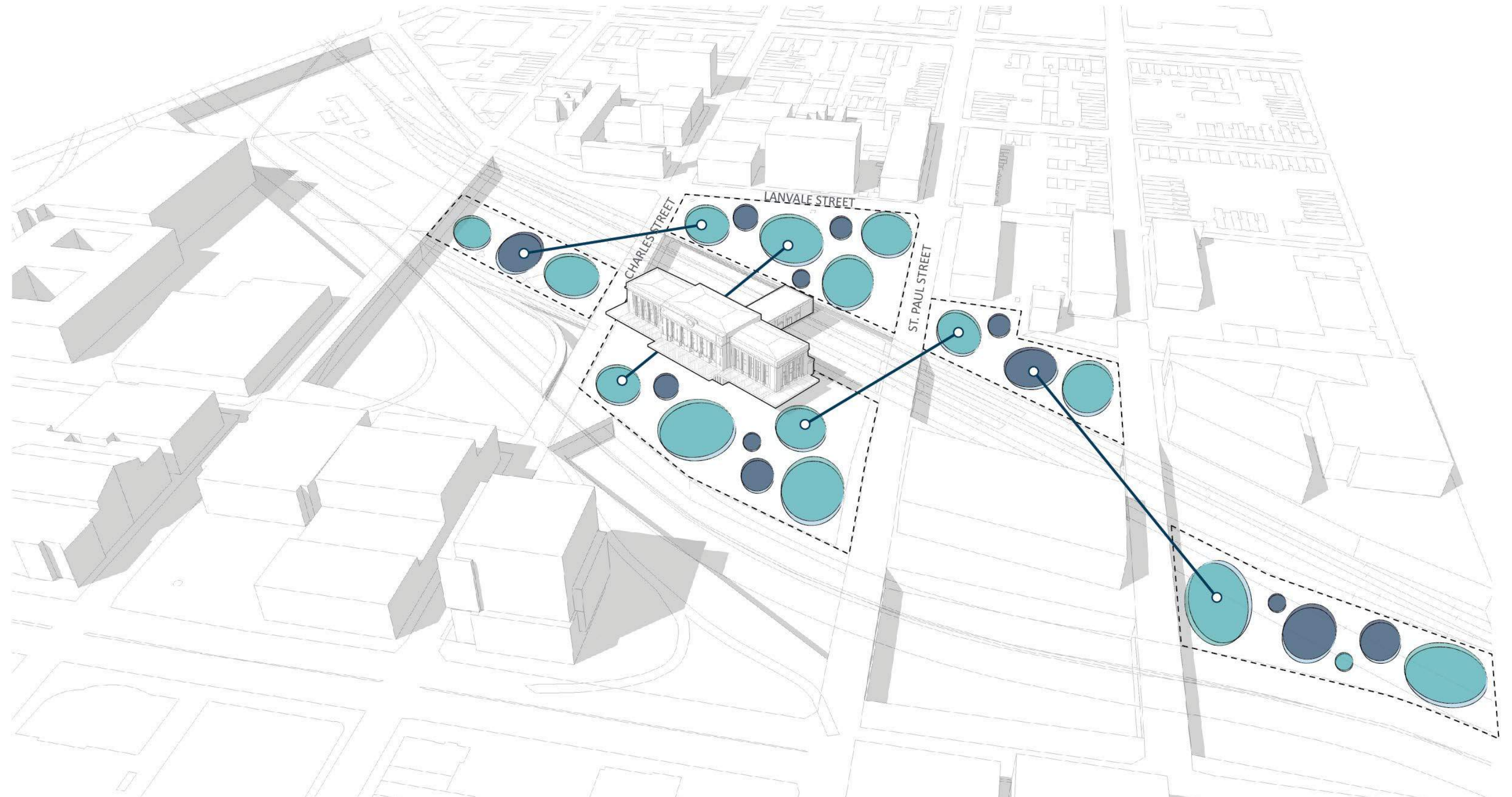
What if...the plaza prioritized people?



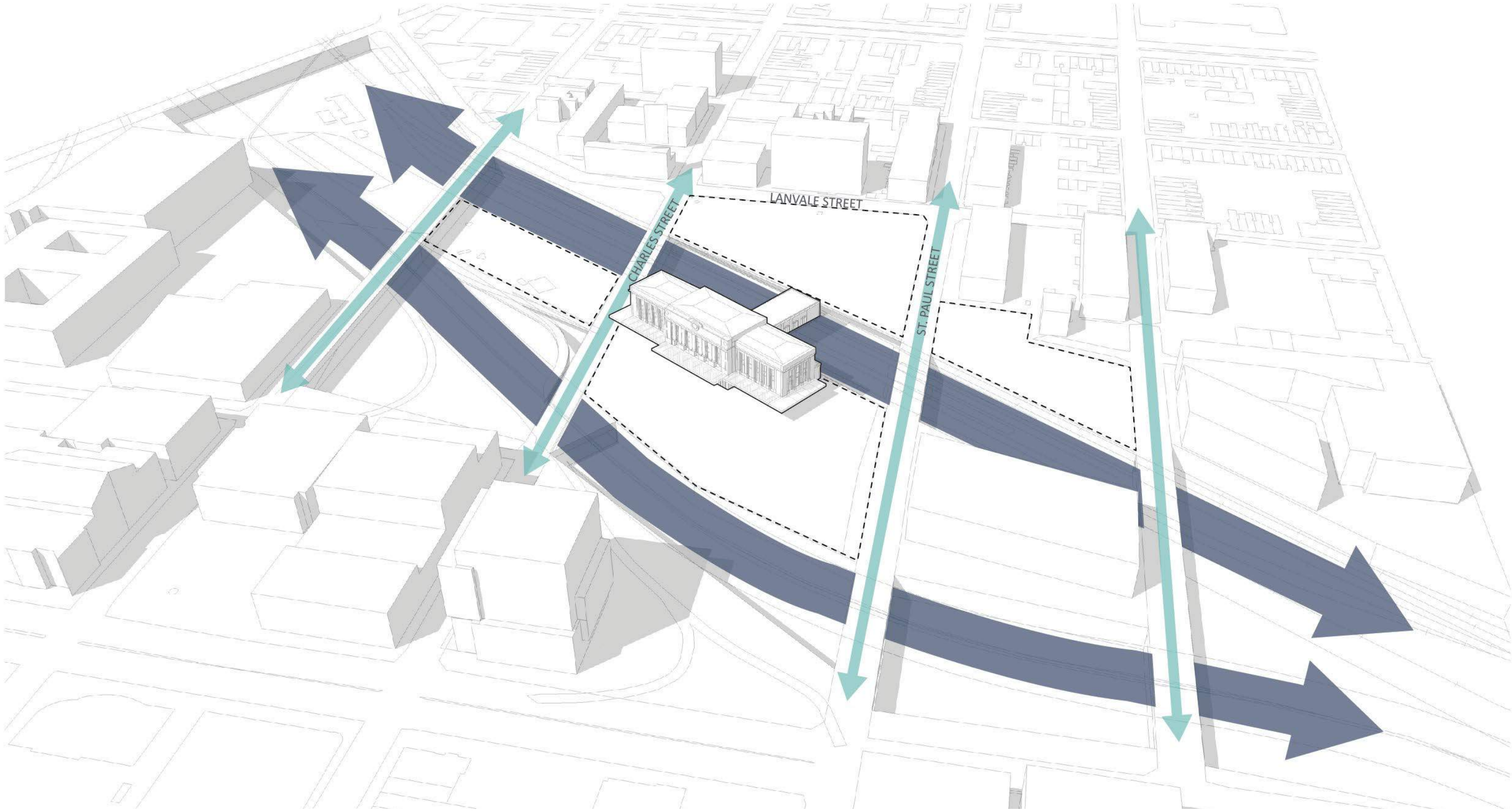
Now...there are several underused lots around the station...



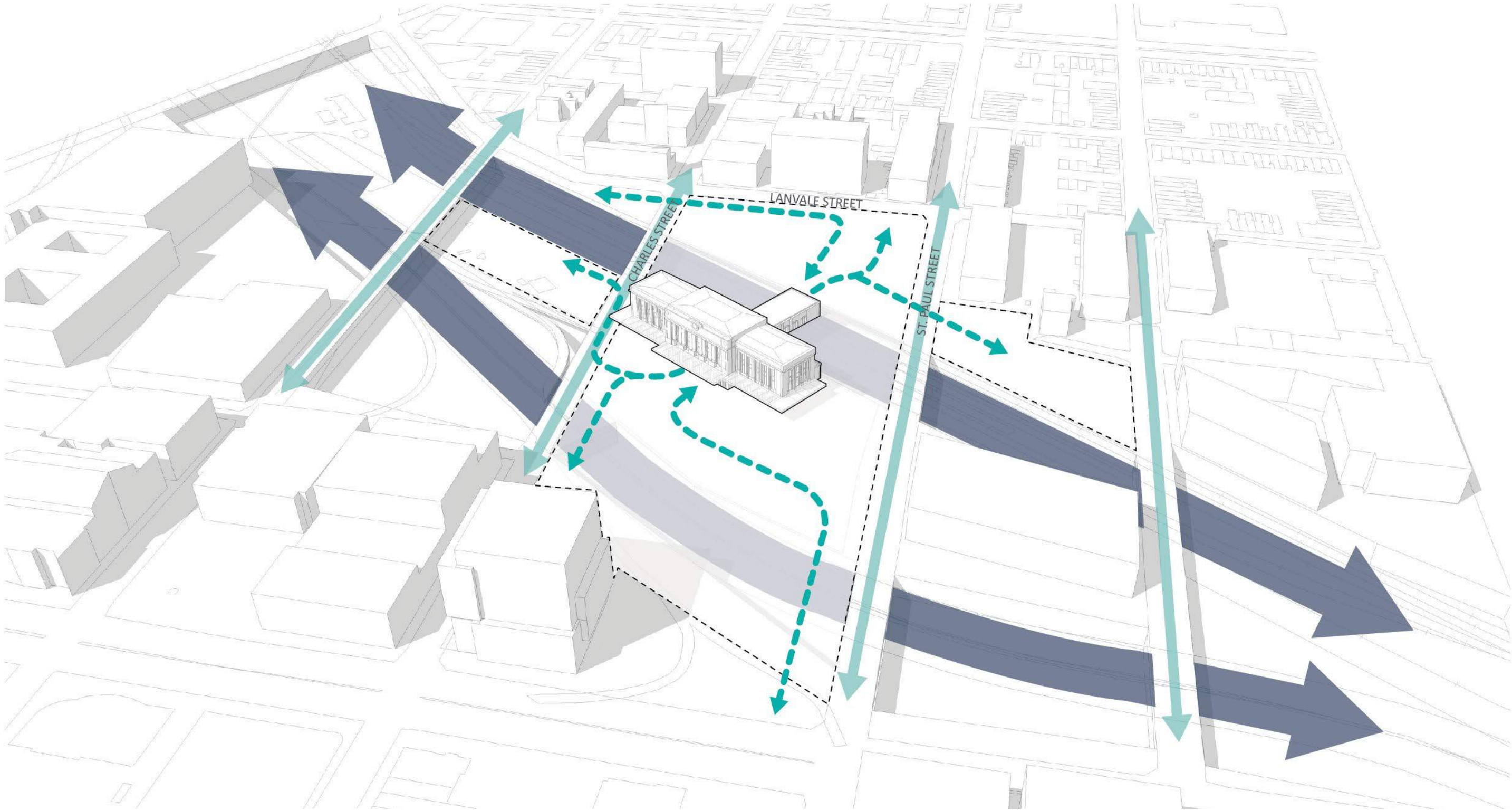
What if...these lots were developed with a mix of uses?



Now...the station feels disconnected from the adjacent neighborhoods...



What if...it became a connector?



01 02 03

→ Roundtable
Topics



Roundtable Instructions

- There are **3 topics & 3 rounds** - meaning you have a chance to participate in every topic!
- After each 20 minute round, you switch to a new topic by **changing tables.**
- Try to **mix it up** and sit with different people when you switch topics.
- Respect one another and **have fun!**



Roundtable Topics



plazas, streetscape
+ public realm



station experience
+ transit connectivity



character, identity
+ place

● Plazas, Streetscape + Public Realm



● Station Experience + Transit Connectivity



● Character, Identity + Place



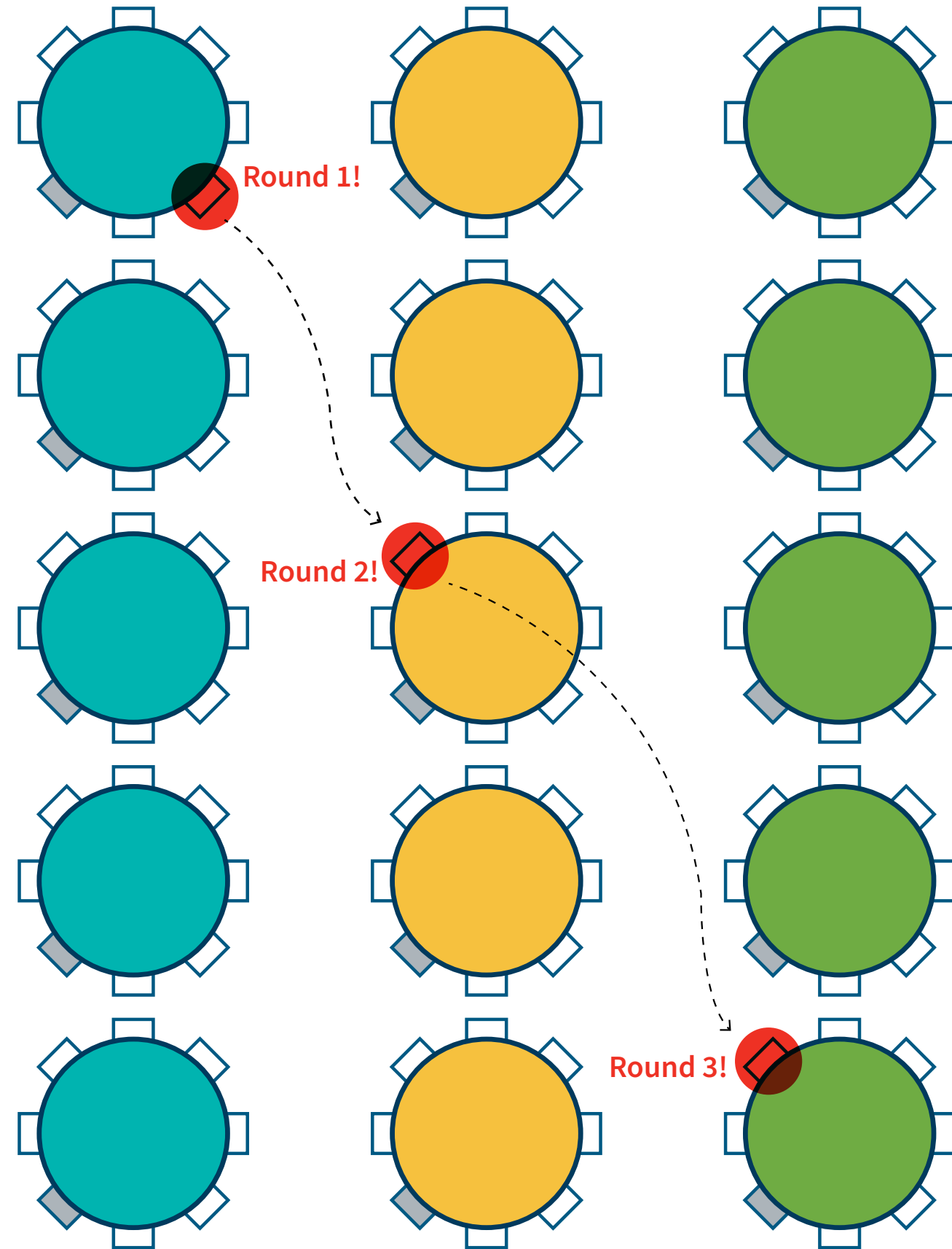
Roundtable Instructions

Each table has..

- Facilitator
- Participants

Roundtable topics

- plazas, streetscape + public realm
- station experience + transit connectivity
- character, identity + place



NEXT STOP —————> BALTIMORE
PENN STATION

Planning Kickoff
July 31, 2018

University of Baltimore